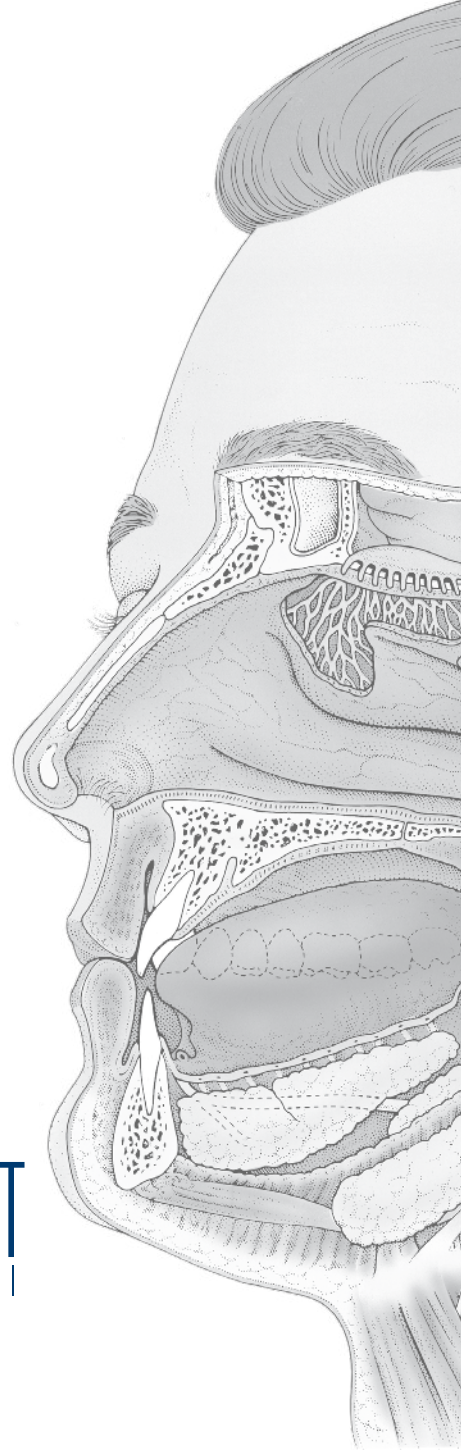
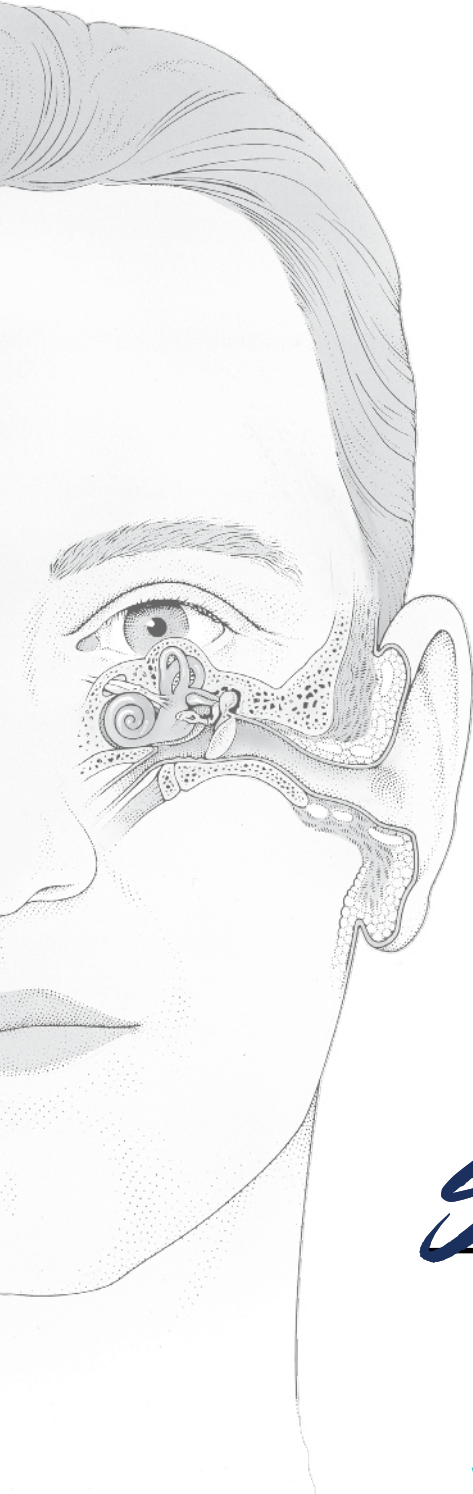


ENT

Rhinology and Otology Products

Catalog



INNOVIA MEDICAL COMPANIES

www.shippertmedical.com
www.summitmedicalusa.com

VENTILATION TUBES

MATERIALS DESCRIPTIONS. STERILE.

Fluoroplastic >> FP / BL (blue) or FP / W (white)

Inert, biocompatible and very smooth. The rigid material facilitates tube insertion and its nonstick characteristics may reduce adhesion formation and/or clogging. 100% certified virgin material.

Polyethylene >> PE / BL (blue)

Features proven biocompatibility and a smooth surface which reduces or prevents clogging of the lumen during the early post-implant period. 100% certified virgin material.

Silicone Elastomer >> S / BL (blue)

Extremely soft, compliant and elastic material. It is easily manipulated, extremely lubricious, and allows vent tubes to be easily compressed for insertion or removal. 100% certified medical grade silicone resin.

Stainless Steel >> SS

Rigidity facilitates insertion and is extremely durable. Stainless steel has a long-proven history of biocompatibility with high strength and is resistant to corrosion and attack by body fluids. 100% certified ASTM F138 stainless steel.

Titanium E >> TT

One-half the weight of stainless steel with many of the same features and benefits. It has excellent biocompatibility, is extremely resistant to corrosion and attack by body fluids, its rigidity facilitates insertion and it is extremely durable. 100% certified ASTM F136-92 titanium.

ORDERING INFORMATION

*SUFFIX INDICATORS ::

VT-XXXX-01 :: Indicates 1 vent tube per package with six packages per dispenser box

VT-XXXX-50 :: Indicates 50 vent tube packages per dispenser box

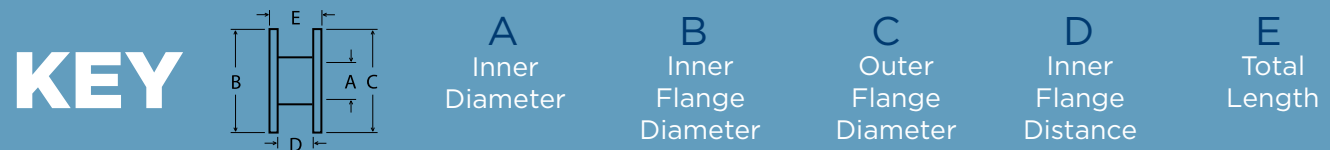
Unless noted with an asterisk, both options are available.

DIMENSIONS

Measurements are listed in millimeters (schematic example and KEY below).

All ventilation tube dimensions are approximate and subject to manufacturing variances.

All ventilation tubes are sterile, single-use unless otherwise noted.



MRI INFORMATION

The stainless steel vent tubes, titanium vent tube and stainless steel wire have been determined to be MR-conditional according to the terminology specified in the American Society for Testing and Materials (ASTM) International, Designation: F2503-05.

A patient with this device can be scanned safely immediately after placement under the following conditions:

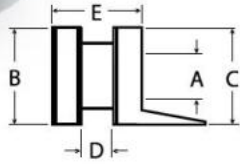
- Static magnetic field of 3 Tesla or less
- Maximum spatial gradient magnetic field of 720-Gauss/cm or less

Additional information can be obtained by contacting Summit Medical.

ORDERING + CUSTOMER SERVICE

1.800.888.8663 | www.shippertmedical.com

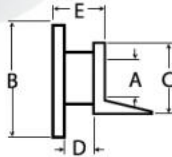
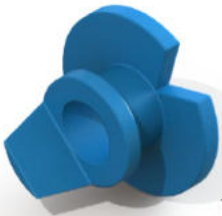
1.888.229.2875 | www.summitmedicalusa.com



DONALDSON

The large lumen offers good ventilation and the dual flange design resists migration and extrusion. Available with a tab for insertion and removal convenience. Sterile. Single use.

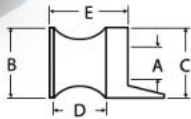
Product No.	Feature	Material	A	B	C	D	E
VT-0100	---	S / BL	1.14	2.4	2.4	0.8	2.2
VT-0102	---	FP / W	1.14	2.84	2.84	1.43	2.0



PAPARELLA

Available in two inner lumen and flange sizes (Types I and II), the notched inner flange is designed for a "twist-in" insertion in a smaller incision. Sterile. Single use.

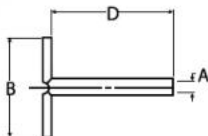
Product No.	Feature	Material	A	B	C	D	E
VT-0300	Type I	S / BL	1.14	2.4	2.1	1.1	2.2
VT-0301	Type II	S / BL	1.42	4.4	2.7	1.1	2.2



SHEPARD

Ease of insertion with forceps or a tube inserter have led to this design's popularity. Available in silicone with a tab or in fluoroplastic with and without wire. Sterile. Single use.

Product No.	Feature	Material	A	B	C	D	E
VT-0200	w/Tab	S / BL	1.00	2.4	2.4	1.6	2.4
VT-0204	---	FP / W	1.00	2.4	2.4	1.6	2.4



T-TUBE

Most often used for longer-term ventilation, the flexible flanges permit insertion through a smaller incision, stable positioning in the tympanic membrane, and easy removal. Sterile. Single use.

Product No.	Feature	Material	A	B	C	D	E
VT-0400	---	S / BL	1.14	9.8	---	12.0	---



INNOVIA MEDICAL COMPANIES



ENT-OCT2018.RevA

SHIPPERT MEDICAL

Centennial, Colorado | USA

www.shippertmedical.com

P: 1.800.888.8663 F: 1.800.284.0864

SUMMIT MEDICAL

St. Paul, Minnesota | USA

www.summitmedicalusa.com

P: 1.888.229.2875 F: 1.888.229.1941